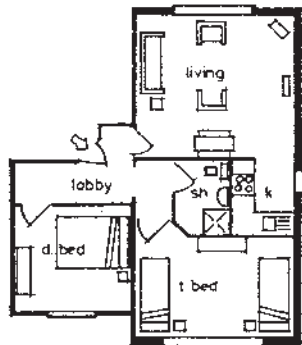


## **SECOND FLOOR**



### **Flat 7 (2 persons)**

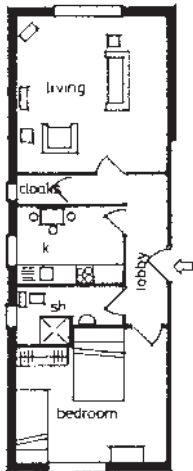
Comprising lounge with sea views, kitchenette, shower room with wc and wash hand basin. Bedroom 1 with double bed and bedroom 2 with twin beds. Gas C.H.

**Low £239    High £309**

### **Flat 8 (2 persons)**

Comprising lounge with partial sea views, separate kitchen/diner, shower room with wc and wash hand basin, bedroom with one double and one single bed. Gas C.H.

**Low £231    High £299**



\* **On the second floor some rooms have sloping ceilings**

### **MID-WEEK AND WEEKEND BREAKS (off-season)**

We are happy to be able to offer these off-season breaks again this year. The beauty of these holidays is that they are reasonably priced and we ask for no more advance notice than a telephone call, even if you want your holiday to start the same day.

**Prices for 3 nights are from as little as £160 per flat.**

# St. David's

## Holiday Apartments

68 COLWYN AVENUE, RHOS-ON-SEA  
COLWYN BAY, NORTH WALES, LL28 4NN  
Telephone Colwyn Bay (01492) 548576    Mobile: 07879 841235  
[www.stdavidsapartments.com](http://www.stdavidsapartments.com)

### **ACCOMMODATION & TARIFF, 2012**

#### **Low Season:**

Up To June 2nd  
August 25th onwards

#### **High Season:**

June 2nd - August 25th

### **TERMS PER FLAT, WEEKLY, Saturday to Saturday**

The following are all fully self-contained holiday apartments, of varying design. Each has full gas or electric heating, electric cooker and fridge, microwave and toaster, fitted carpets and flat screen TV etc. Gas and electricity charged as meter reading, payable on departure. All the beds are supplied with continental quilts and blankets, and bed linen is included in the price. Towels may be hired from us (1 bath, 1 hand) price £3.00 per set. Please notify us when booking.

All prices quoted are based on two people sharing.

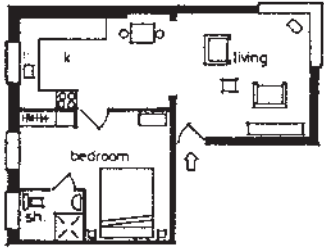
A £70 supplement is payable for each additional person in Flat 7.

The accommodation is unsuitable for children under the age of 12.

**Sorry, no pets.**

**Strictly non-smokers only please.**

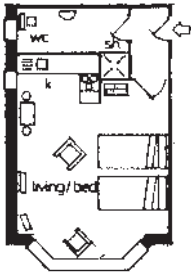
## GROUND FLOOR



### Flat 1 (2 persons)

Pleasant lounge overlooking rear garden, fully fitted kitchen, bedroom with double bed, and en suite shower room with wc and wash hand basin. Gas C.H.

**Low £258 High £327**



### Flat 2 (2 persons)

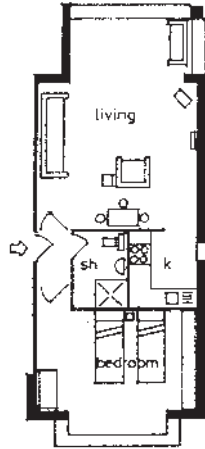
Studio apartment with twin beds, small kitchenette area, shower room with wc and wash hand basin.

**Low £220 High £280**

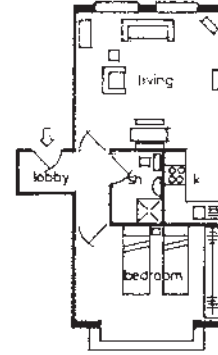
### Flat 3 (2 persons)

Spacious lounge with 10' patio doors leading to garden. Kitchenette, shower room with wc and wash hand basin, bedroom with twin beds. Gas central heating.

**Low £270 High £340**



## FIRST FLOOR



### Flat 4 (2 persons)

Comprising lounge with sea views, kitchenette, shower room with wc and wash hand basin, bedroom with twin beds.

**Low £258 High £325**

### Flat 5 (2/3 persons) New 2010

Comprising lounge with hill and side sea views, fully fitted kitchen/diner. Bedroom 1 with double bed. Bedroom 2 with single bed. Shower room with wc and wash hand basin, central heating

**Low £332 High £402**

